



## Navigator Lodge

Plot 57

**Price: £239,995**

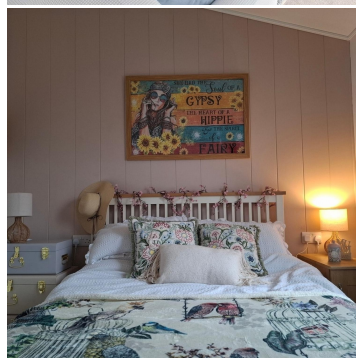
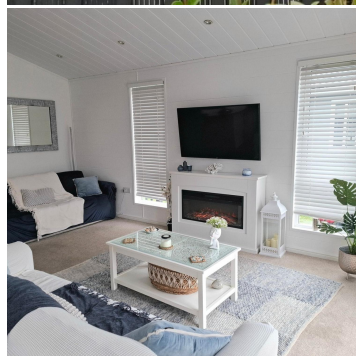
### Description

Discover The Navigator Lodge, a prestige 40ft x 20ft retreat perfectly positioned on Plot 57 at Roydon Marina Village. Designed for those who value comfort, nature and refined living, this beautiful lodge offers a peaceful sanctuary for year-round escapes, thanks to its 12-month holiday season. From the moment you enter, soft furnishings, plush carpets and elegant finishes create a warm and welcoming atmosphere, while large windows allow natural light to flood the open-plan living space, framing calming views of the marina surroundings. The spacious lounge and dining area provides a serene setting for relaxed slow mornings and cosy evenings warmed by the feature electric fire. Enjoy a flowing, sociable layout that blends perfectly into the modern fully equipped kitchen, complete with integrated fridge and freezer, four-ring hob, eye-level oven and microwave, and generous storage — ideal for preparing everything from fresh breakfasts to indulgent evening meals after a day exploring.

Two beautifully appointed bedrooms offer peaceful places to unwind. The master suite features a comfortable double bed, walk-in wardrobe and private en-suite shower room, while the inviting second double bedroom includes a free-standing wardrobe, making it perfect for family, visiting friends or quiet afternoons curled up with a book. A stylish main bathroom includes a full bathtub with overhead shower and vanity, providing a spa-like space to relax and refresh. Thoughtfully designed for longer stays, the lodge also includes a fully fitted utility room with integrated washing machine, worktop space and additional storage — ideal for keeping everyday life effortless and organised.

Outside, step onto your south-facing, non-slip deck, a peaceful outdoor retreat where you can enjoy all-day sunshine, peaceful morning coffees and tranquil evenings watching the marina life drift by. A fitted privacy screen ensures a secluded and calming environment, perfect for unwinding in every season. With its sophisticated style, modern comforts and idyllic waterside setting, The Navigator Lodge offers a lifestyle of relaxation, nature and pure tranquillity — a place where time slows, and every day feels like a retreat. Make this stunning holiday home your personal sanctuary and discover the beauty of marina-side living at Roydon Marina Village.

- 40ft x 20ft Holiday Home
- 2 bedrooms
- 1 main bathroom, 1 ensuite
- South-facing non-slip deck with privacy screen
- 12 month holiday season
- Fully furnished
- Under warranty until March 2030
- 45 years left on the 50-year licence.



Call: 01279 792777

Email: [reception@roydonmarinavillage.co.uk](mailto:reception@roydonmarinavillage.co.uk)  
[www.roydonmarinavillage.co.uk](http://www.roydonmarinavillage.co.uk)

Contact Us

